



Organization Chart

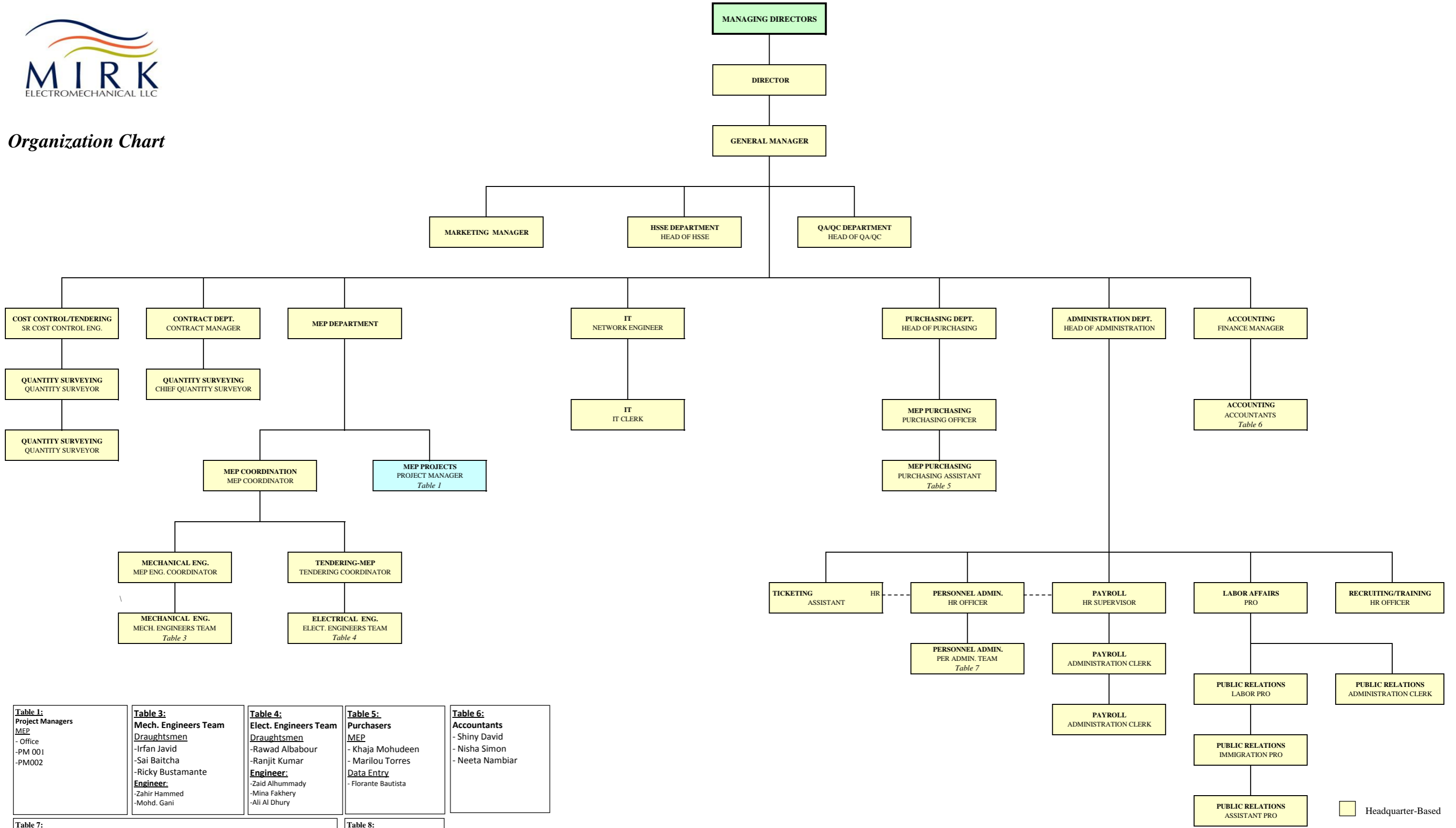


Table 1: Project Managers MEP - Office -PM 001 -PM002	Table 3: Mech. Engineers Team <u>Draughtsmen</u> -Irfan Javid -Sai Baitcha -Ricky Bustamante <u>Engineer:</u> -Zahir Hammed -Mohd. Gani	Table 4: Elect. Engineers Team <u>Draughtsmen</u> -Rawad Albabour -Ranjit Kumar <u>Engineer:</u> -Zaid Alhumady -Mina Fakhery -Ali Al Dhury	Table 5: Purchasers MEP - Khaja Mohudeen - Marilou Torres <u>Data Entry</u> - Florante Bautista	Table 6: Accountants - Shiny David - Nisha Simon - Neeta Nambiar
Table 7: Personnel Admin. Team <u>Drivers</u> - Muthu Raj - Ranjit Singh <u>Office Clerk</u> Rollylyn Mendez <u>Office Boy</u> -Yousuf Subhanmiah - Sarwar Titu	Table 8: Treasury Team <u>Officers</u> - Sayed Zakir Hussain <u>Treasury Analyst</u> - Samran Habib			

Headquarter-Based
 Outsourced Position
 — Direct Reporting
 - - - - - Joint Collaboration